

# PORTLAND HOTEL MARKET PERFORMANCE SUMMARY

LAST UPDATED APRIL 2, 2021

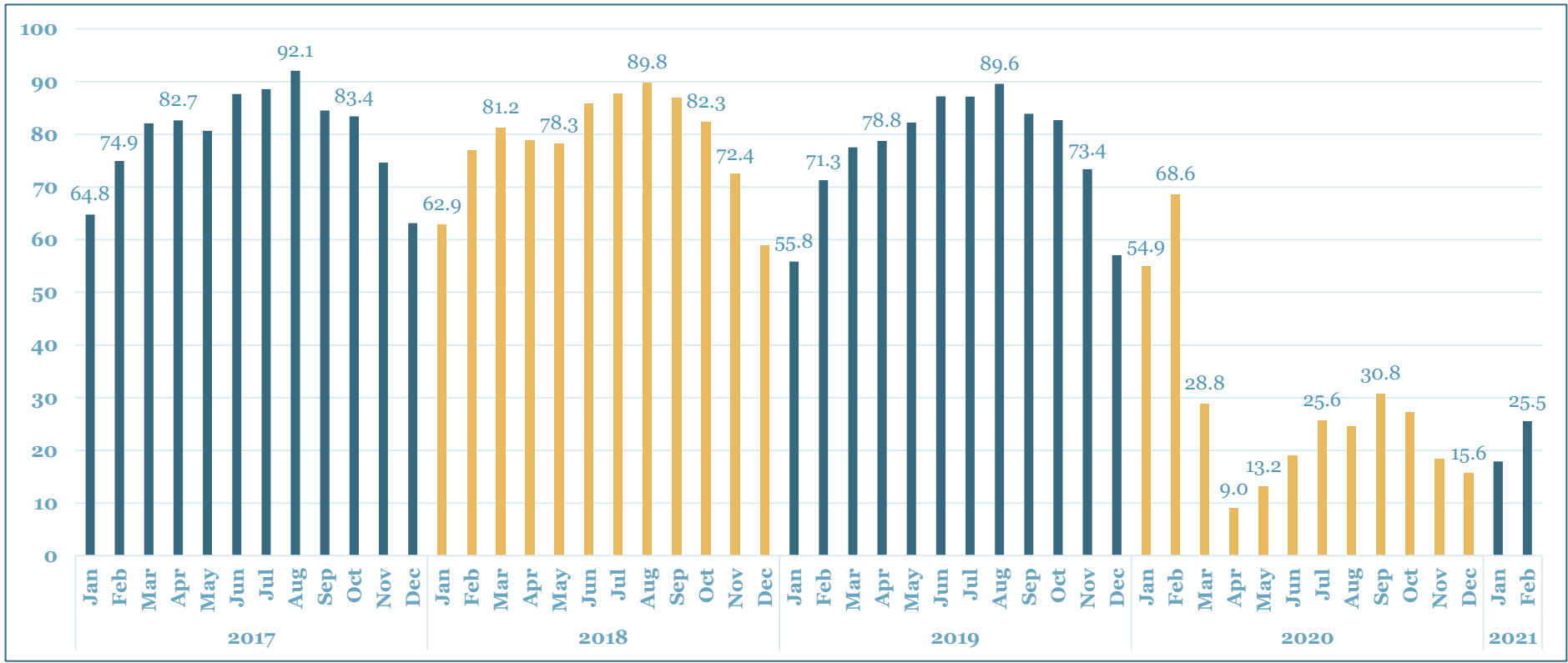
# CENTRAL CITY

(CENTRAL CITY INCLUDES DOWNTOWN AND LLOYD)

# CENTRAL CITY: OCCUPANCY (%)

(CENTRAL CITY INCLUDES DOWNTOWN AND LLOYD)

Central City Full-Year Occupancy 2017: 79.8%  
 Central City Full-Year Occupancy 2018: 78.5%  
 Central City Full-Year Occupancy 2019: 77.1%  
 Central City Full-Year Occupancy 2020: 30.1%



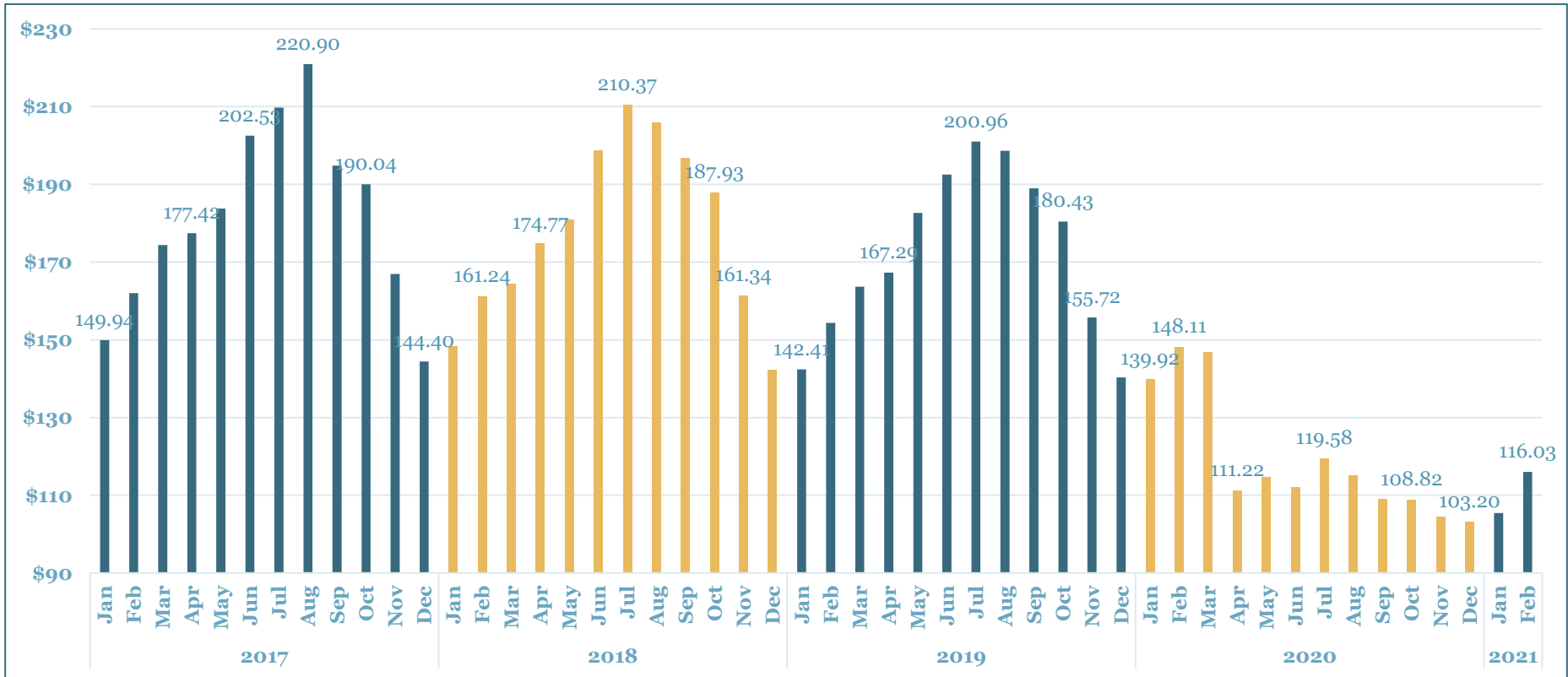
Source: STR

Central City Supply = 9,949 Rooms at 55 Hotels (\*Due to Covid-19, not all are currently available)

# CENTRAL CITY: AVERAGE DAILY RATE (\$)

(CENTRAL CITY INCLUDES DOWNTOWN AND LLOYD)

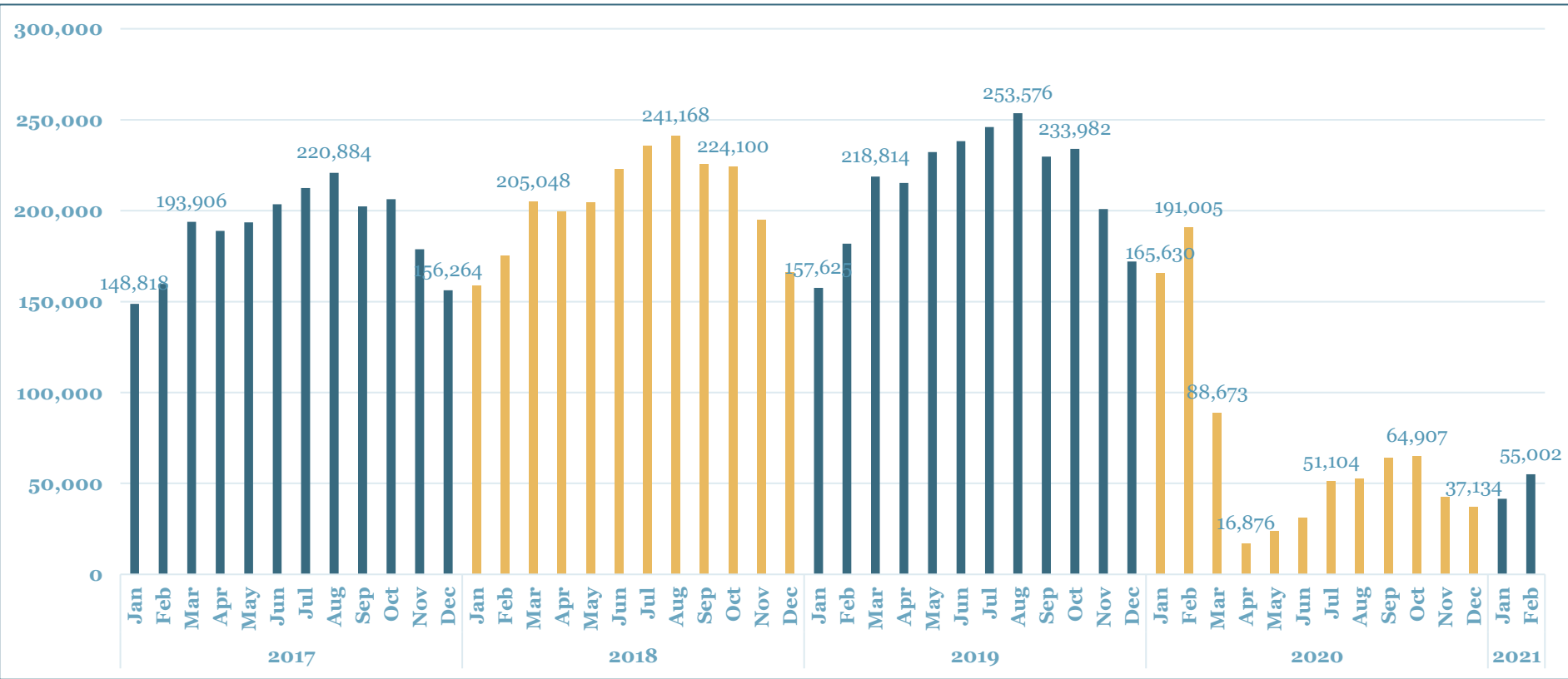
Central City Full-Year ADR 2017: \$182.59  
 Central City Full-Year ADR 2018: \$180.33  
 Central City Full-Year ADR 2019: \$174.95  
 Central City Full-Year ADR 2020: \$129.08



# CENTRAL CITY: DEMAND (ROOMS SOLD)

(CENTRAL CITY INCLUDES DOWNTOWN AND LLOYD)

Central City Full-Year Demand 2017: 2.31 million  
 Central City Full-Year Demand 2018: 2.45 million  
 Central City Full-Year Demand 2019: 2.58 million  
 Central City Full-Year Demand 2020: 830,701



Source: STR

Central City Supply = 9,949 Rooms at 55 Hotels (\*Due to Covid-19, not all are currently available)

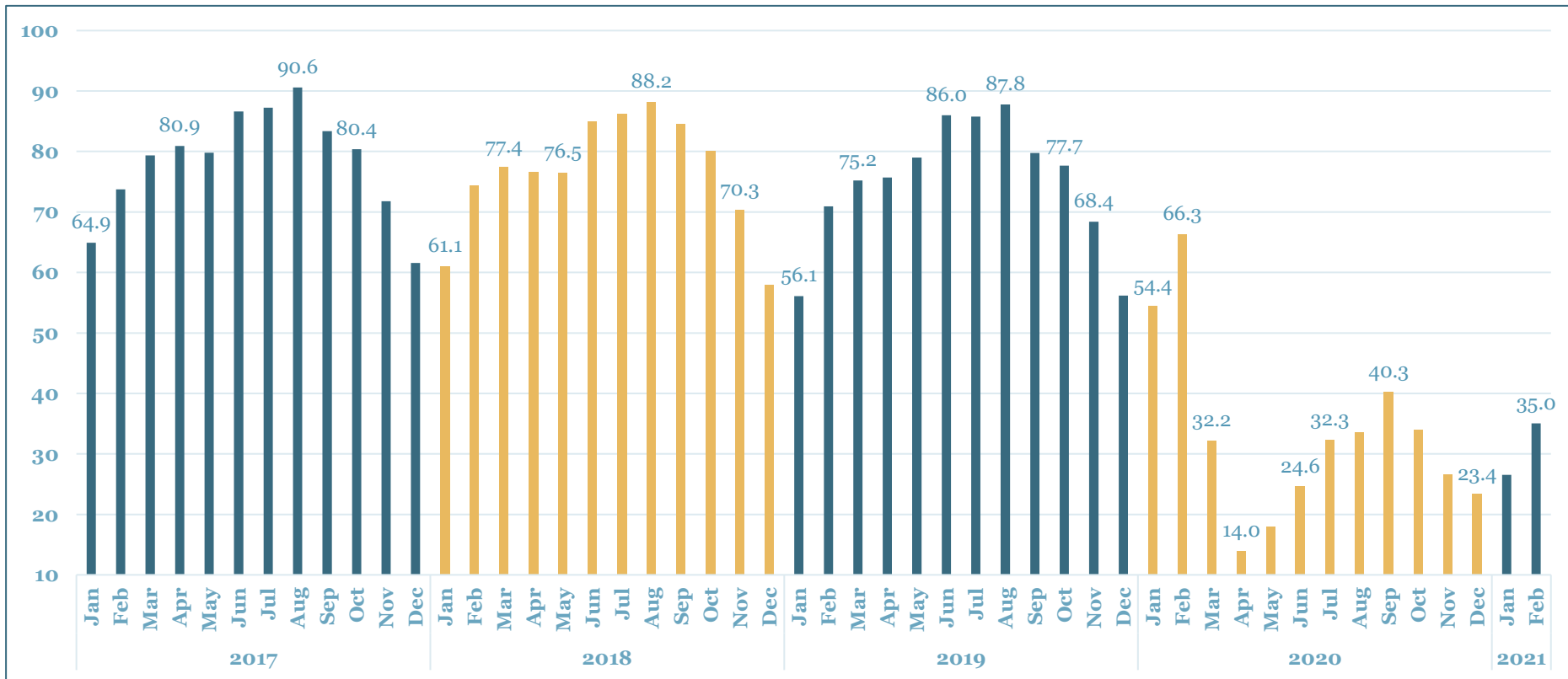
# **CITY OF PORTLAND**

**(CITY OF PORTLAND INCLUDES DOWNTOWN, LLOYD, AIRPORT,  
JANTZEN BEACH AND EASTSIDE)**

# CITY OF PORTLAND: OCCUPANCY (%)

(CITY OF PORTLAND INCLUDES DOWNTOWN, LLOYD, AIRPORT, EASTSIDE, AND JANTZEN BEACH)

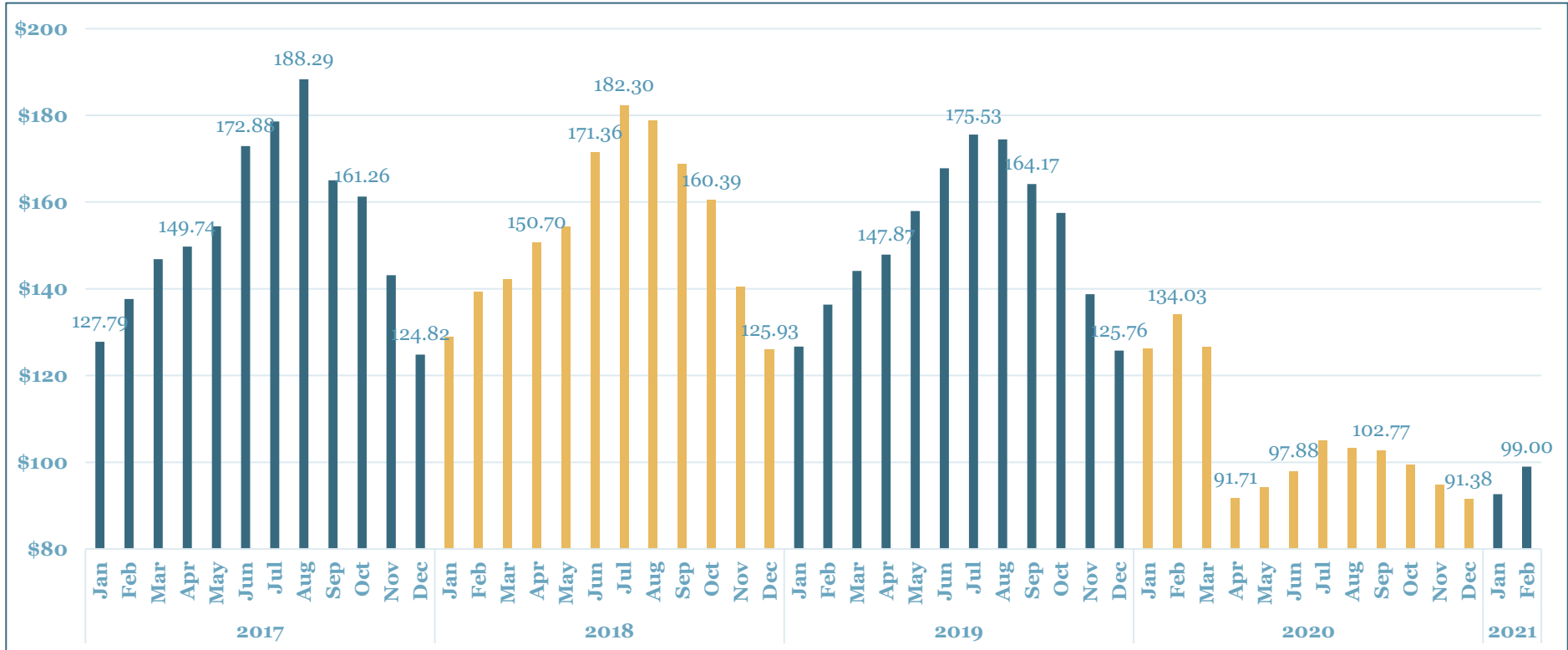
City of Portland Full-Year Occupancy 2017: 78.0%  
 City of Portland Full-Year Occupancy 2018: 76.5%  
 City of Portland Full-Year Occupancy 2019: 74.8%  
 City of Portland Full-Year Occupancy 2020: 34.2%



# CITY OF PORTLAND: AVERAGE DAILY RATE (\$)

(CITY OF PORTLAND INCLUDES DOWNTOWN, LLOYD, AIRPORT, EASTSIDE, AND JANTZEN BEACH)

City of Portland Full-Year ADR 2017: \$155.19  
 City of Portland Full-Year ADR 2018: \$155.85  
 City of Portland Full-Year ADR 2019: \$153.61  
 City of Portland Full-Year ADR 2020: \$112.01

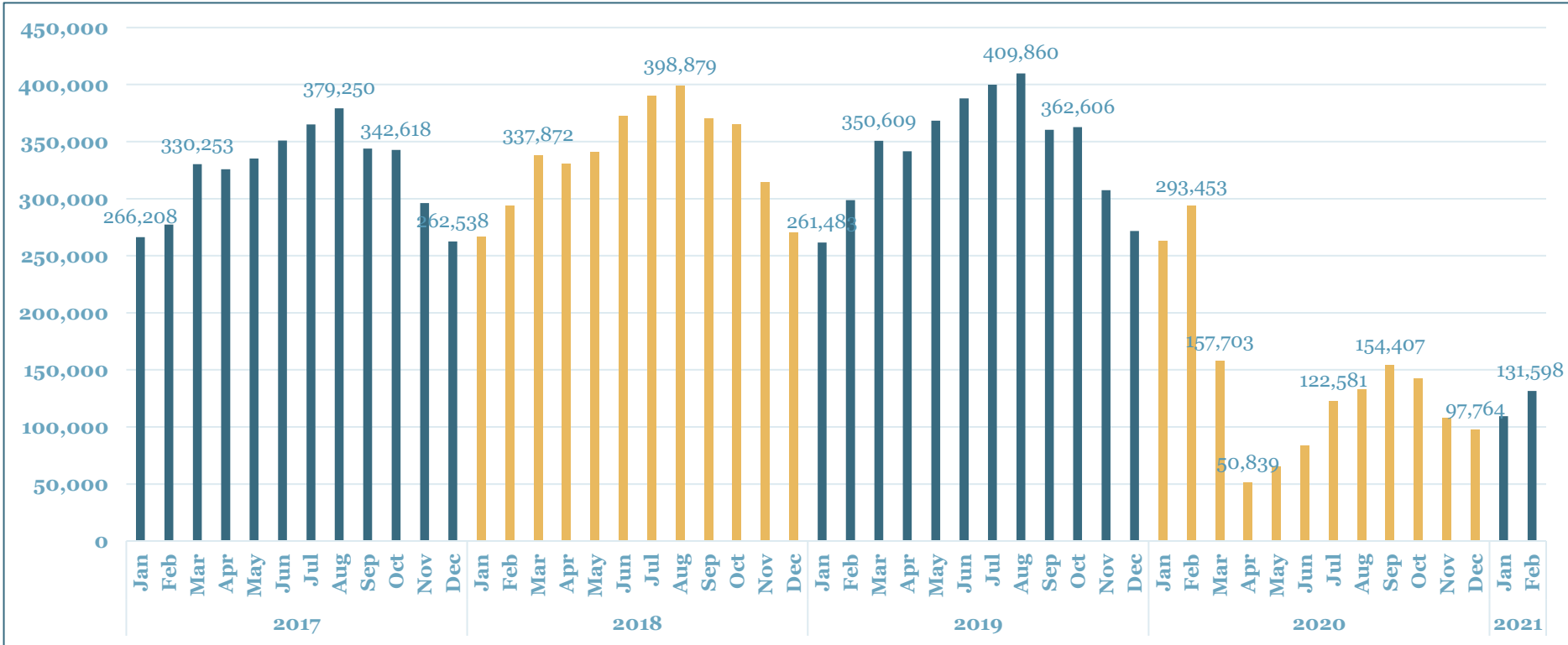




# CITY OF PORTLAND: DEMAND (ROOMS SOLD)

(CITY OF PORTLAND INCLUDES DOWNTOWN,  
LLOYD, AIRPORT, EASTSIDE, AND JANTZEN BEACH)

City of Portland Full-Year Demand 2017: 3.95 million  
 City of Portland Full-Year Demand 2018: 4.05 million  
 City of Portland Full-Year Demand 2019: 4.12 million  
 City of Portland Full-Year Demand 2020: 1.67 million



Source: STR

City of Portland Supply = 15,811 Rooms at 107 Hotels (\*Due to Covid-19, not all are currently available)

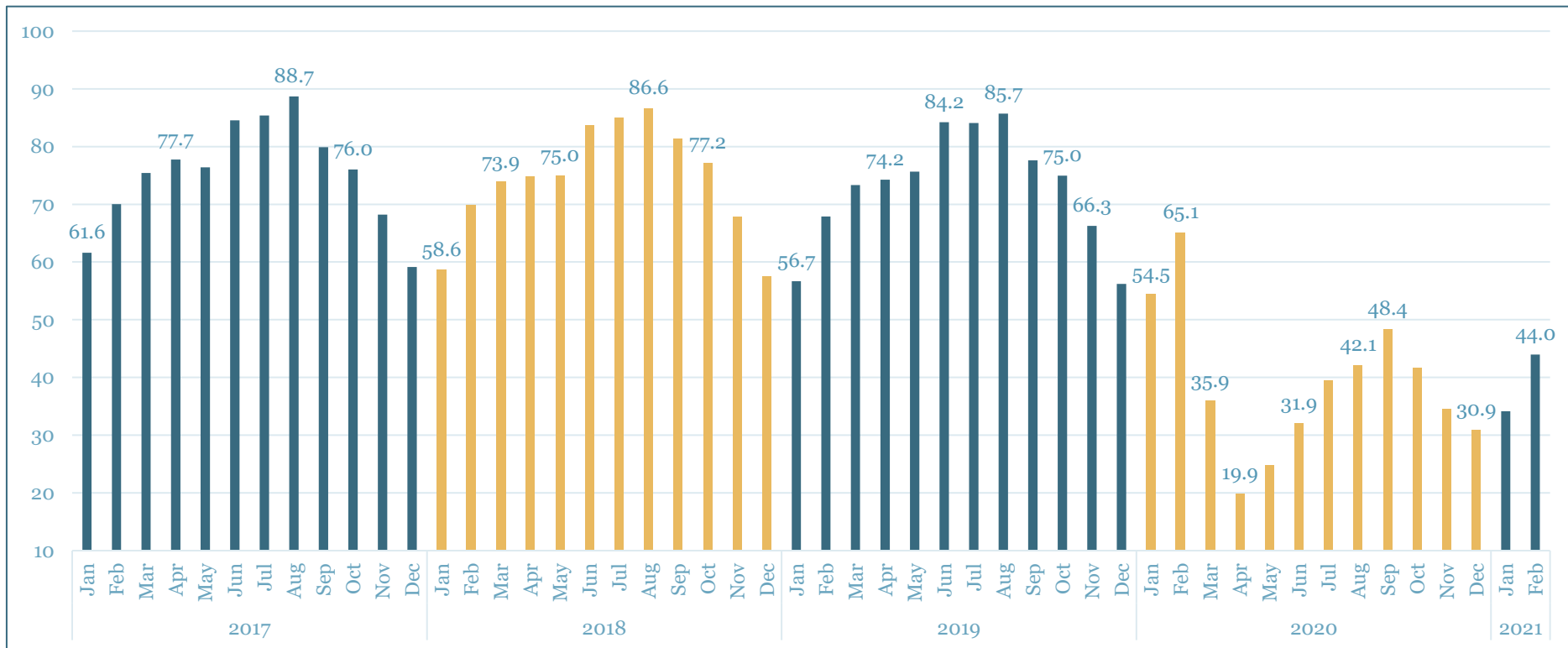
# **GREATER PORTLAND METRO**

**(GREATER PORTLAND METRO INCLUDES CITY OF PORTLAND  
AND SURROUNDING SUBURBS)**

# GREATER PORTLAND METRO: OCCUPANCY (%)

(GREATER PORTLAND METRO MARKET INCLUDES  
CITY OF PORTLAND AND SURROUNDING SUBURBS)

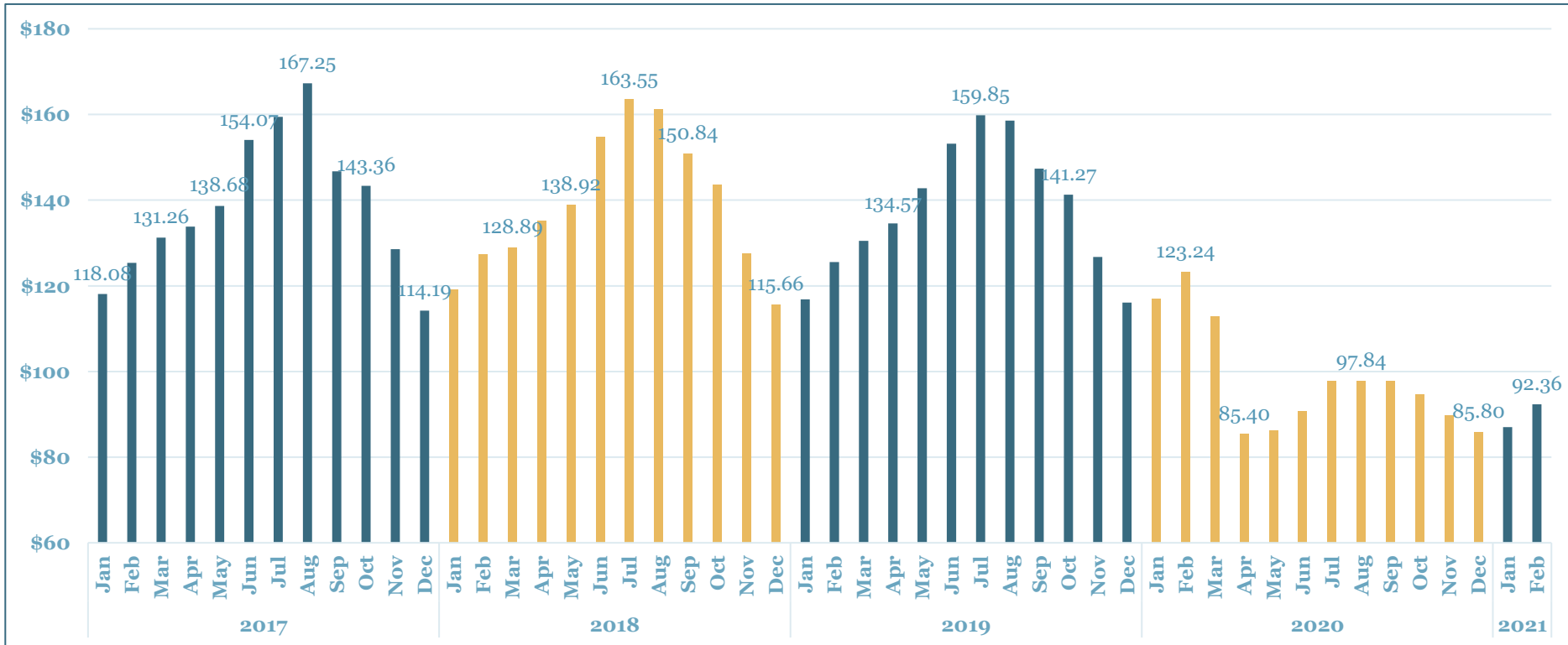
Portland Metro Full-Year Occupancy 2017: 75.2%  
 Portland Metro Full-Year Occupancy 2018: 74.2%  
 Portland Metro Full-Year Occupancy 2019: 73.1%  
 Portland Metro Full-Year Occupancy 2020: 39.5%



# GREATER PORTLAND METRO: AVERAGE DAILY RATE (\$)

(GREATER PORTLAND METRO MARKET INCLUDES  
CITY OF PORTLAND AND SURROUNDING SUBURBS)

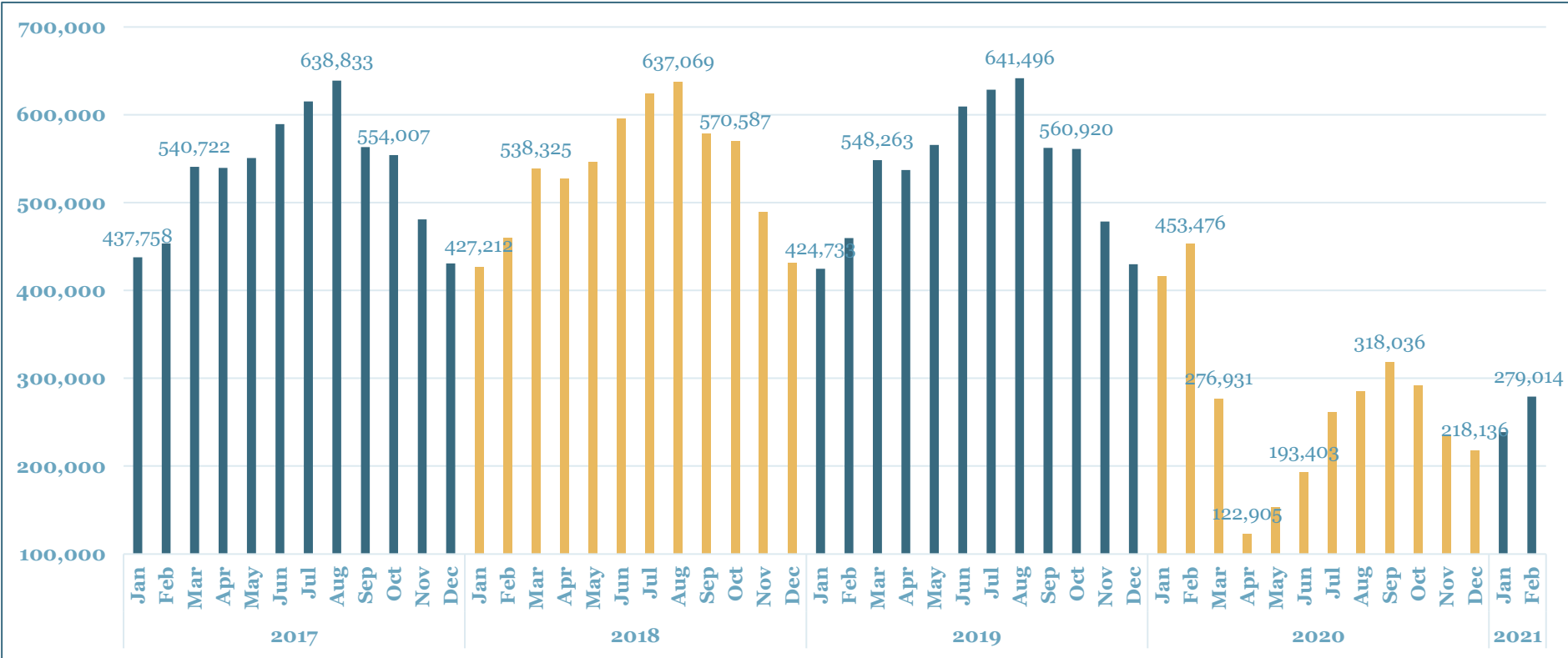
Portland Metro Full-Year ADR 2017: \$140.30  
 Portland Metro Full-Year ADR 2018: \$140.75  
 Portland Metro Full-Year ADR 2019: \$139.63  
 Portland Metro Full-Year ADR 2020: \$102.04



# GREATER PORTLAND METRO: DEMAND (ROOMS SOLD)

(GREATER PORTLAND METRO MARKET INCLUDES  
CITY OF PORTLAND AND SURROUNDING SUBURBS)

Portland Metro Full-Year Demand 2017: 6.39 million  
 Portland Metro Full-Year Demand 2018: 6.43 million  
 Portland Metro Full-Year Demand 2019: 6.44 million  
 Portland Metro Full-Year Demand 2020: 3.23 million



Source: STR Greater Portland Metro Market = 24,855 Rooms at 200 Hotels (\*Due to Covid-19, not all are currently available)